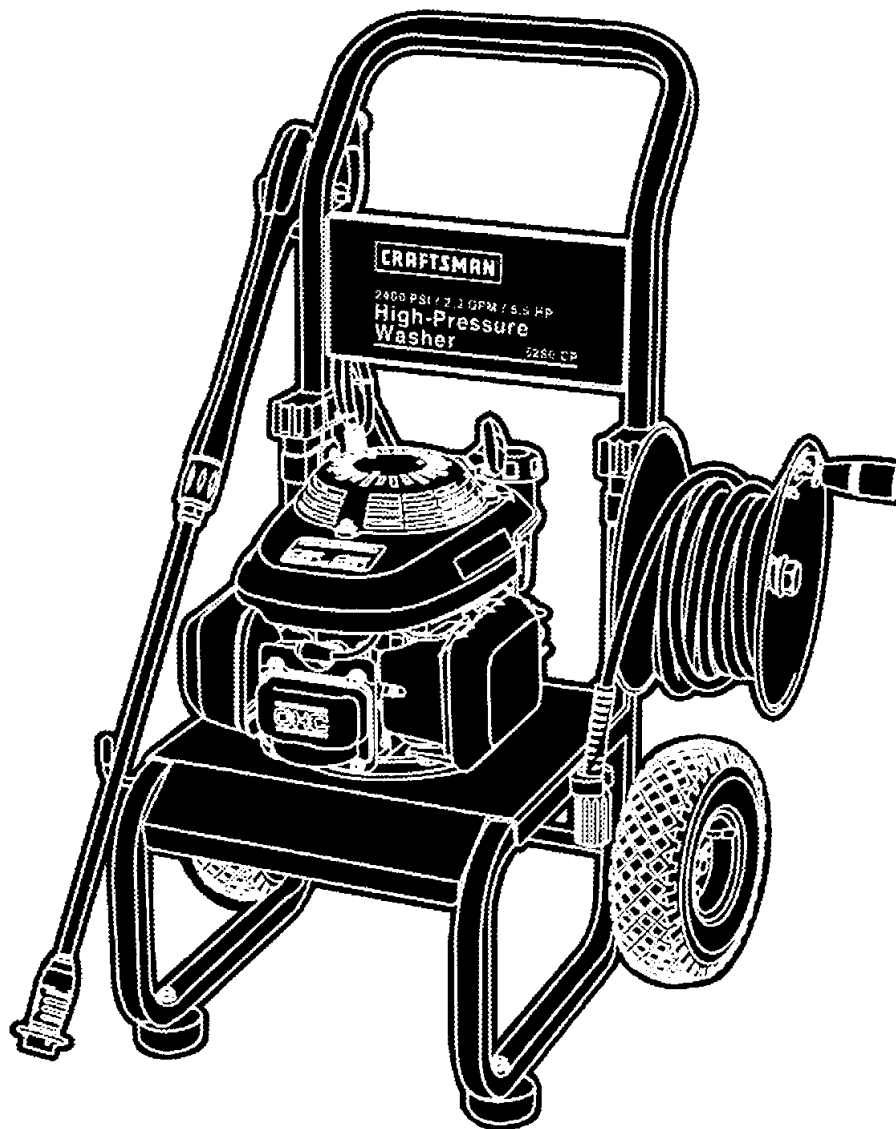


Parts Manual

Mfg. No: 1434-2
580.768342, 2,400 PSI Craftsman



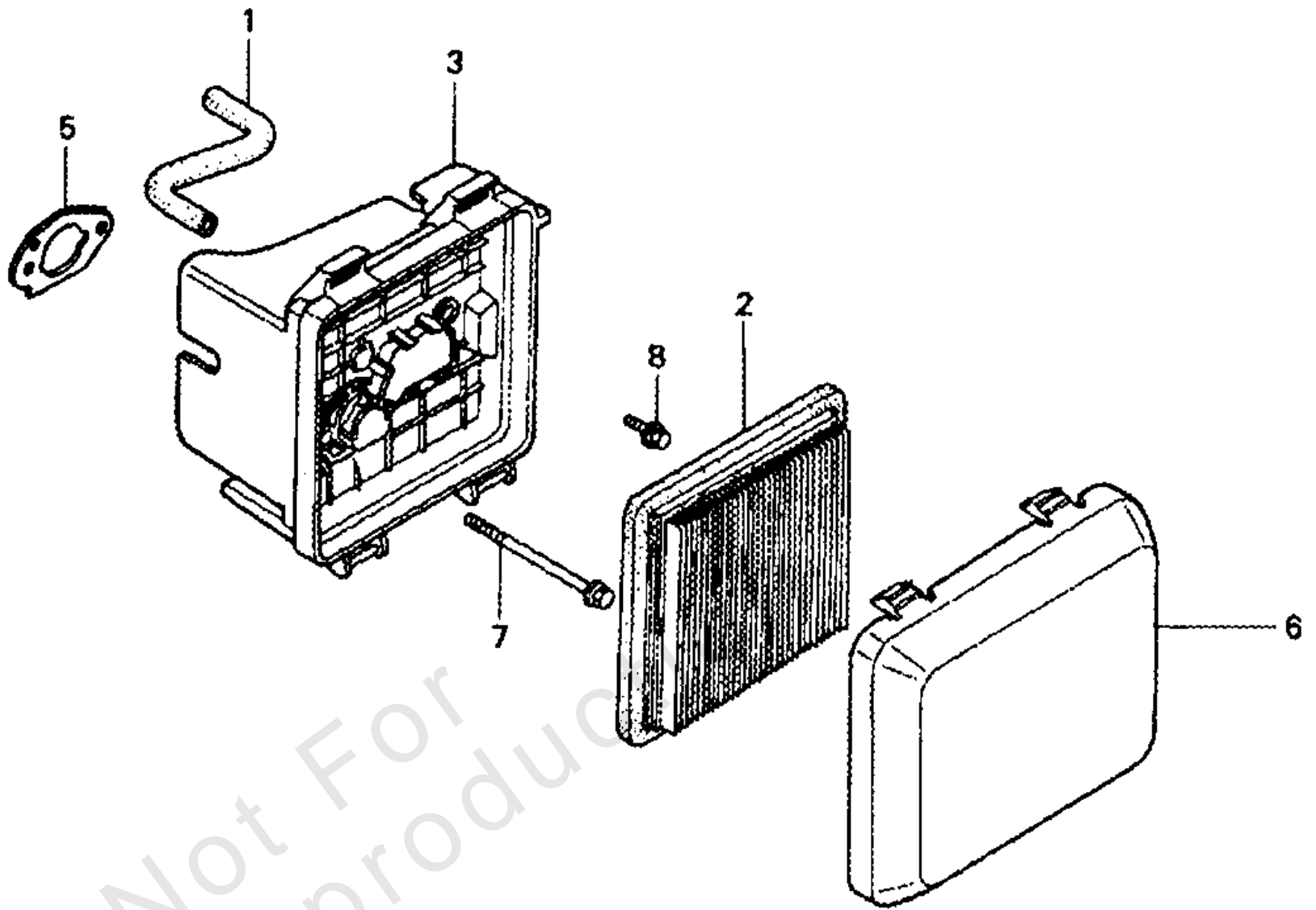
Model Components	Page
Air Cleaner.....	4
Camshaft Pulley.....	6
Carburetor.....	8
Control.....	10
Crankshaft.....	12
Cylinder Barrel.....	14
Fan Cover.....	16
Main Unit.....	18
Muffler.....	20
Oil Pan.....	22
Piston-Connecting Rod.....	24
Pump.....	26
Recoil.....	30
Torque Specification Chart.....	32

Not For
Reproduction

Air Cleaner

Note: Unless noted otherwise, use the standard torque specifications

Mfg. No: 1434-2



Air Cleaner

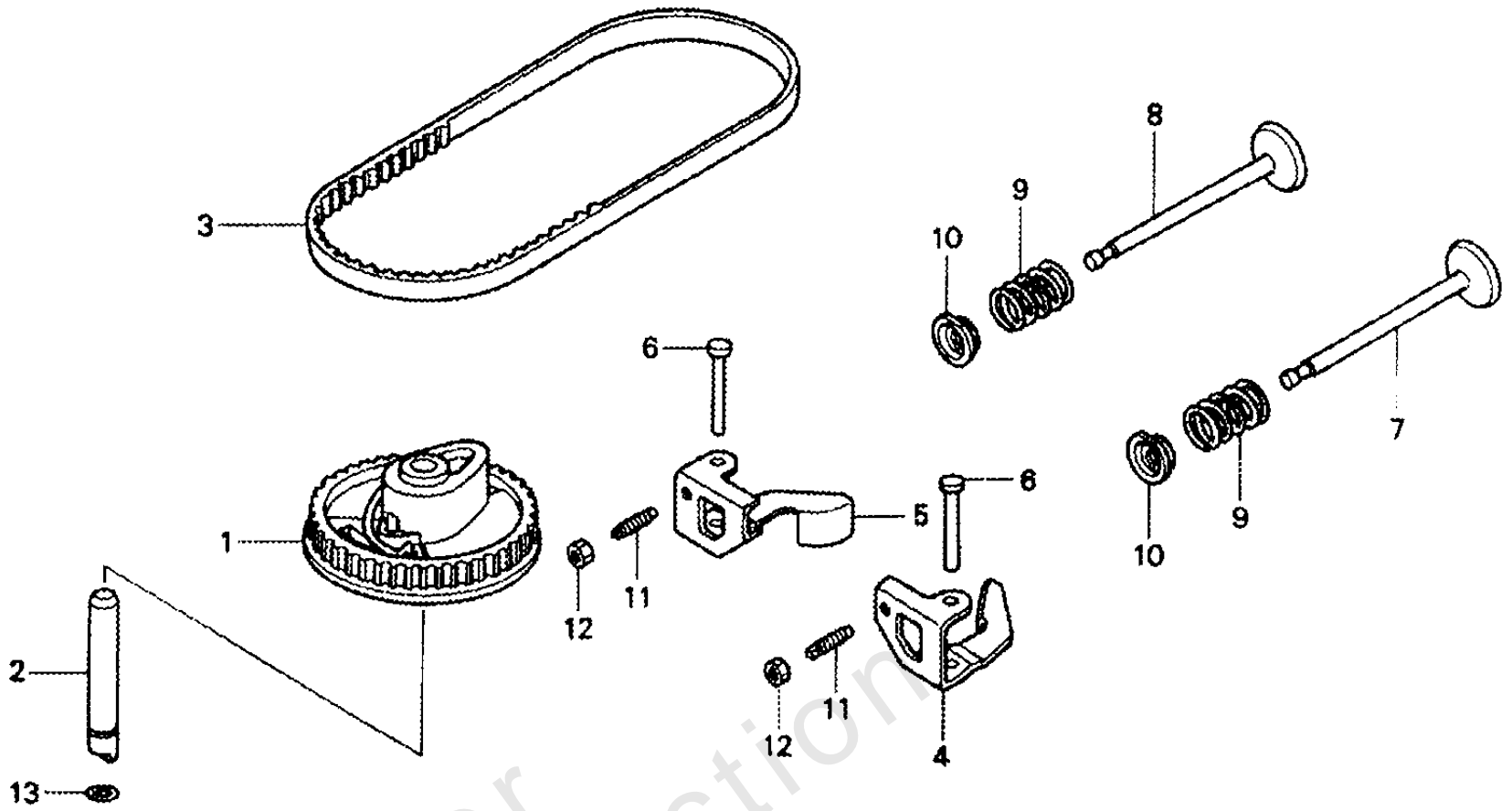
REF NO	PART NO	QTY	DESCRIPTION
1	15721ZM0000	1	TUBE, BREATHER
2	17211ZL8000	1	ELEMENT, AIR CLEANER
3	17220ZM0000	1	CASE ASSY., AIR CLEANER
5	17228ZM0000	1	GASKET, AIR CLEANER
6	17231ZM0000	1	COVER, AIR CLEANER
7	90003ZM0000	2	BOLT, FLANGE (6X86) (CT200)
8	957010601408	1	BOLT, FLANGE (6X14)

Not For
Reproduction

Camshaft Pulley

Note: Unless noted otherwise, use the standard torque specifications

Mfg. No: 1434-2



Not For
Reproduction

Camshaft Pulley

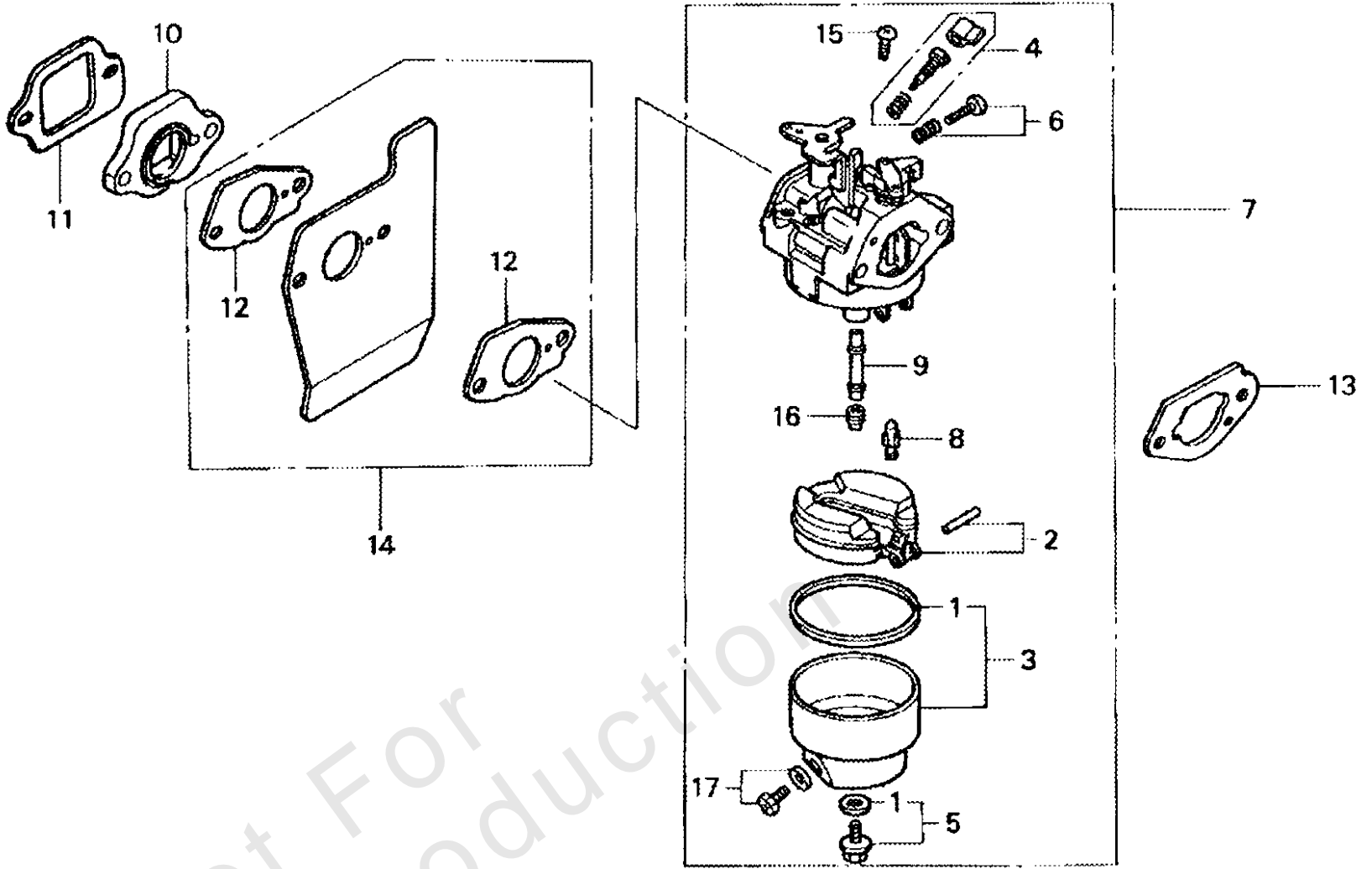
REF NO	PART NO	QTY	DESCRIPTION
1	14320ZL8000	1	PULLEY COMP., CAMSHAFT
2	14324ZL8000	1	SHAFT, CAM PULLEY
3	14400ZL8003	1	BELT, TIMING (84HU7 G-200)
4	14431ZL8000	1	ARM, IN. VALVE ROCKER
5	14441ZL8000	1	ARM, EX. VALVE ROCKER
6	14461ZL8000	2	SHAFT, ROCKER ARM
7	14711ZL8000	1	VALVE, IN.
8	14721ZL8000	1	VALVE, EX.
9	14751ZL8000	2	SPRING, VALVE
10	14771ZE1000	2	RETAINER, IN. VALVE SPRING
11	90012333000	2	SCREW, TAPPET ADJ.
12	90206001000	2	NUT, TAPPET ADJ.
13	91301ZM0V31	1	O-RING (6.8X1.9)

Not For
Reproduction

Carburetor

Note: Unless noted otherwise, use the standard torque specifications

Mfg. No: 1434-2



Not For
Reproduction

Carburetor

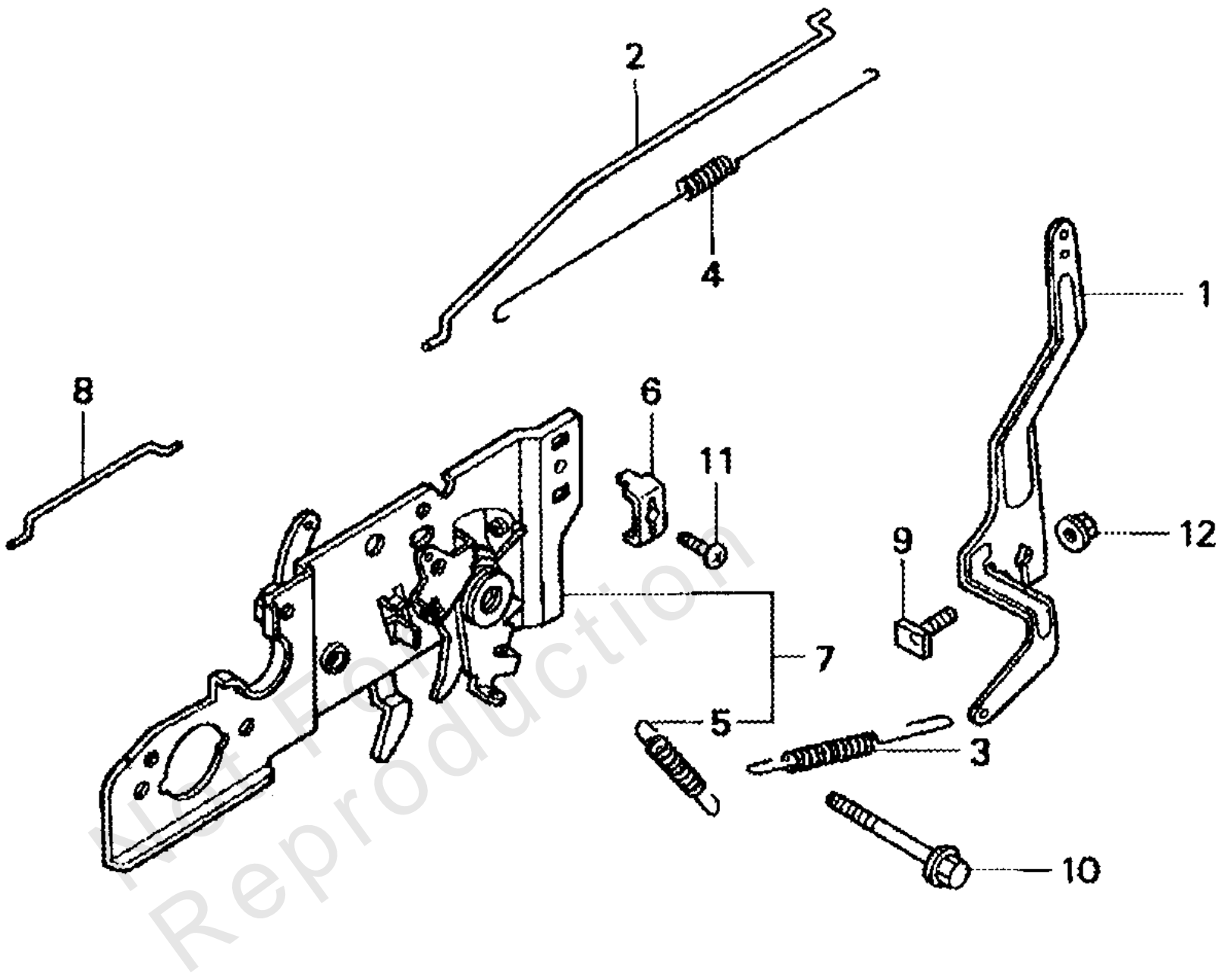
REF NO	PART NO	QTY	DESCRIPTION
1	16010883015	1	GASKET SET
2	16013ZL1003	1	FLOAT SET
3	16015887782	1	CHAMBER SET, FLOAT
4	16016ZG0W00	1	SCREW SET
5	16028ZE0005	1	SCREW SET B.
6	16029ZG0901	1	SCREW SET
7	16100ZM1803	1	CARB. ASSY (BB64B C)
8	16155ZM0003	1	VALVE, FLOAT
9	16166ZM1003	1	NOZZLE, MAIN
10	16211ZL8000	1	INSULATOR, CARBURETOR
11	16212ZL8000	1	GASKET, INSULATOR
12	16221883800	2	CARBURETOR
13	16228ZL8000	1	GASKET, CARB (CHOKE SIDE)
14	19650ZM0000	1	GUIDE COMP., AIR
15	93500050060H	1	SCREW, PAN (5X6)
	93500050061H	1	SCREW, PAN (5X6)
16	991011240550	1	JET, MAIN (#55)
	991011240580	1	JET, MAIN (#58)
	991011240600	1	JET, MAIN (#60)
	991011240620	1	JET, MAIN (#62)
17	16024ZE1811	1	SCREW SET, DRAIN

Not For
Reproduction

Control

Note: Unless noted otherwise, use the standard torque specifications

Mfg. No: 1434-2



Control

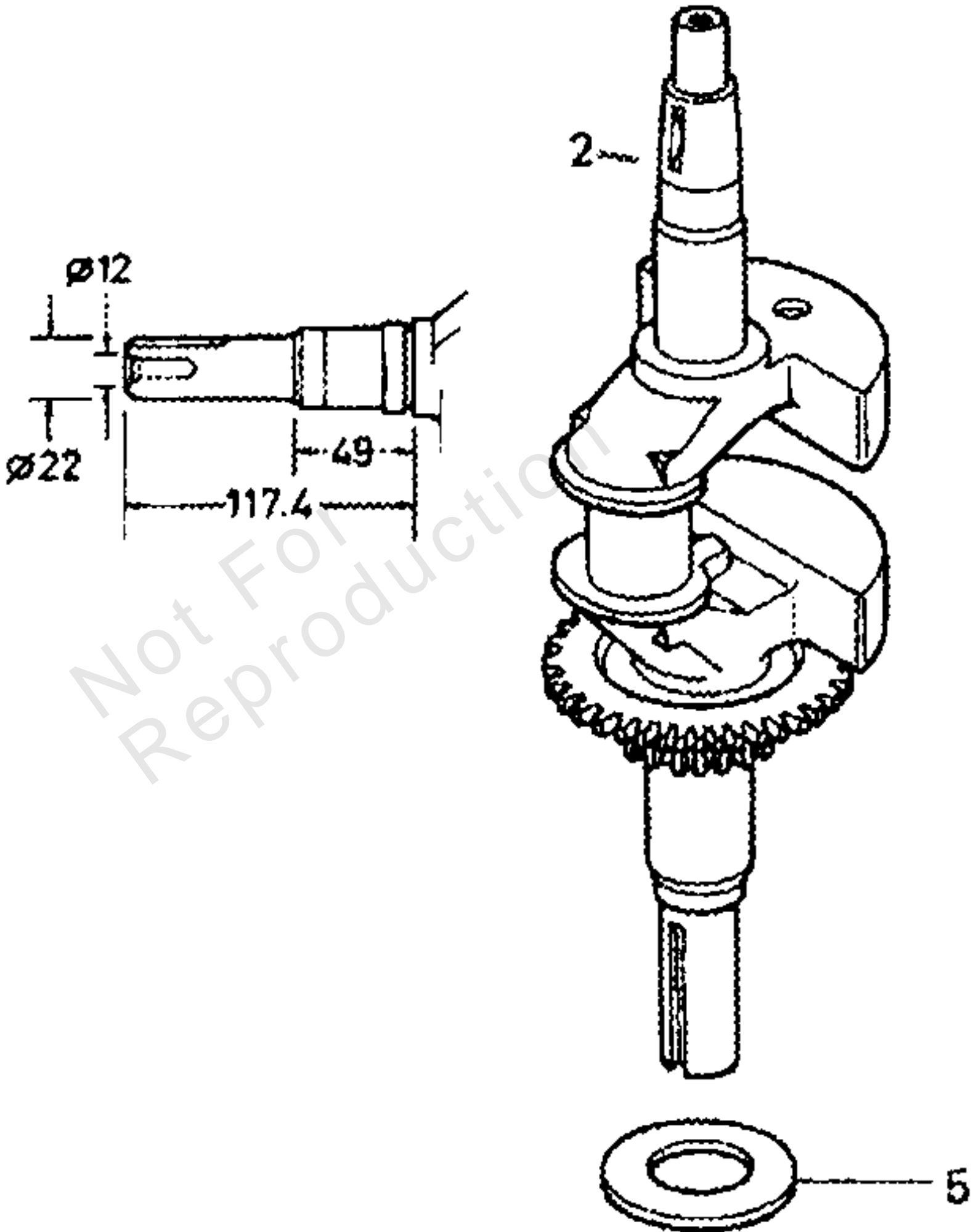
REF NO	PART NO	QTY	DESCRIPTION
1	16551ZM0000	1	ARM, GOVERNOR
2	16555ZM0000	1	ROD, GOVERNOR
3	16561ZM0000	1	SPRING, GOVERNOR
4	16562ZM0000	1	SPRING, THROTTLE RETURN
5	16576ZE7300	1	SPRING, LEVER
6	16576891000	1	HOLDER, CABLE
7	16580ZM0020	1	BASE COMP.,
8	16674ZM0000	1	ROD, CHOKE
9	90015ZE5010	1	BOLT, GOVERNOR ARM
10	90016ZM0000	1	BOLT, FLANGE (6X45) (CT200)
11	93500050160A	1	SCREW, PAN (5X16)
12	9405006000	1	NUT. FLANGE (6MM)

Not For
Reproduction

Crankshaft

Note: Unless noted otherwise, use the standard torque specifications

Mfg. No: 1434-2



Crankshaft

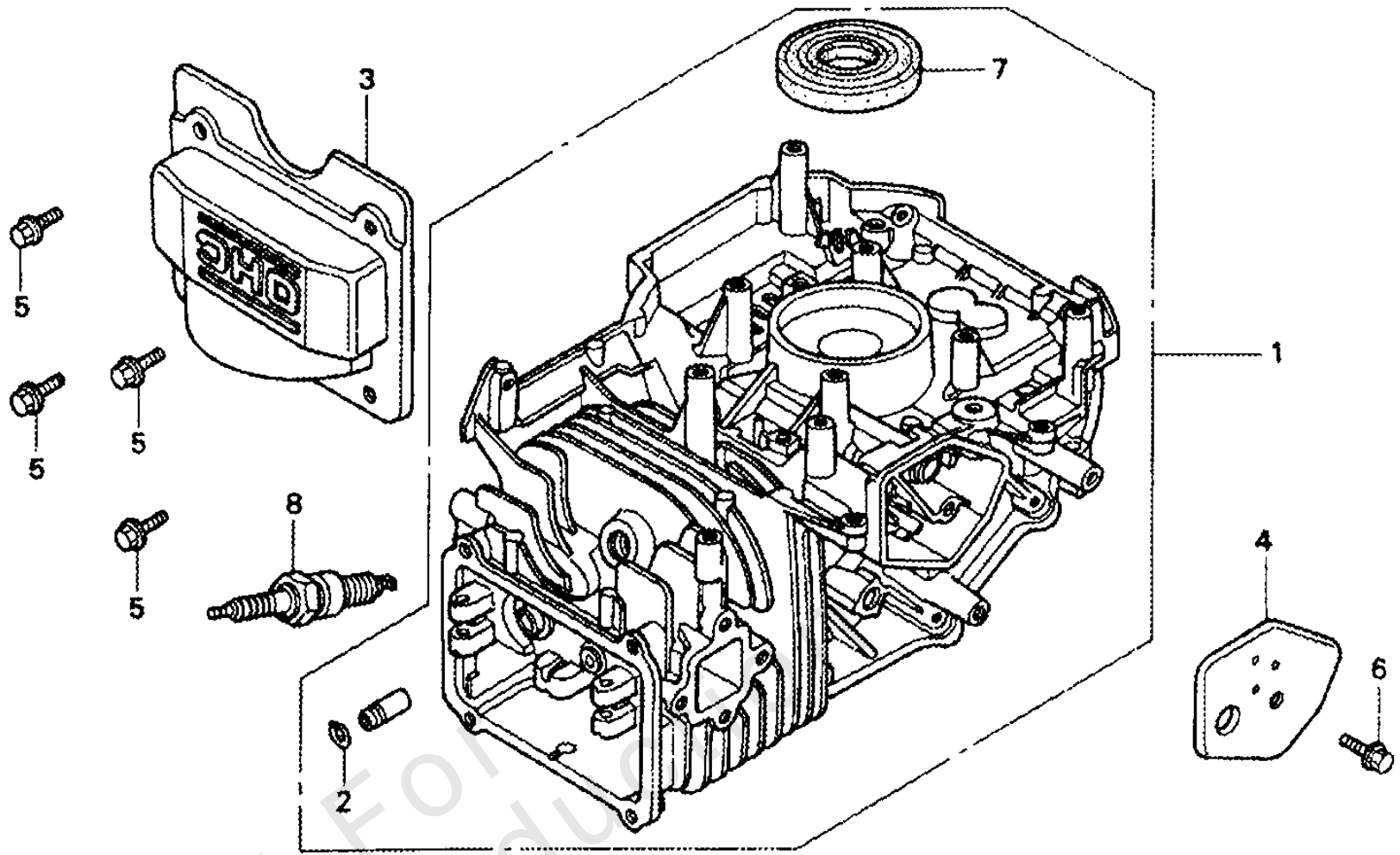
REF NO	PART NO	QTY	DESCRIPTION
2	13310ZM0600	1	CRANKSHAFT COMP.
5	90402ZL8000	1	WASHER, THRUST

Not For
Reproduction

Cylinder Barrel

Note: Unless noted otherwise, use the standard torque specifications

Mfg. No: 1434-2



Not For
Reproduction

Cylinder Barrel

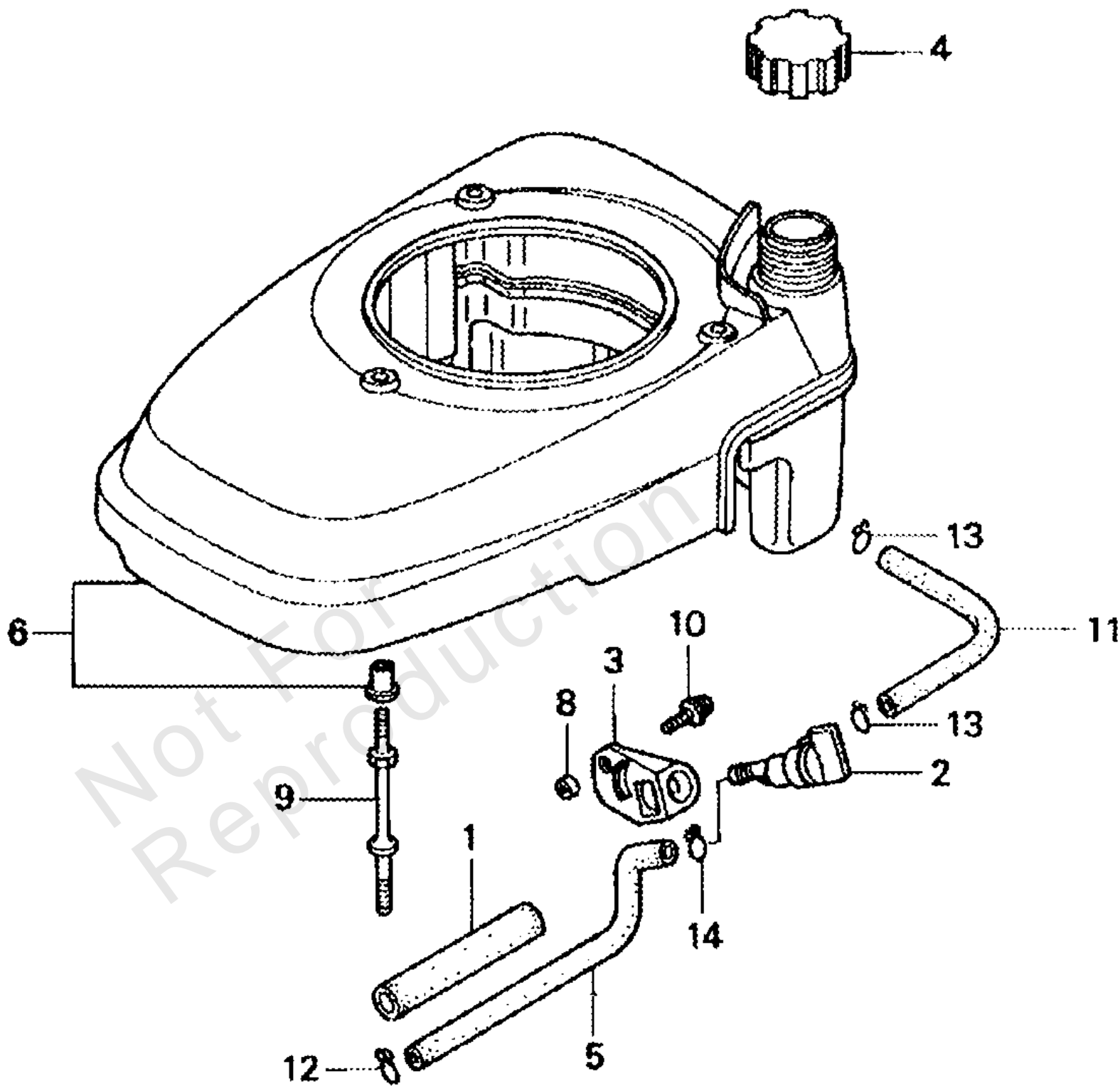
REF NO	PART NO	QTY	DESCRIPTION
1	12000ZL8405	1	CYLINDER ASSY.
2	12216ZE5300	1	CLIP, VALVE GUIDE
3	12311ZL8000	1	COVER, HEAD
4	12355ZL8000	1	COVER COMP., BREATHER
5	90013883000	4	BOLT, FLANGE (6X12)
6	90014952000	1	BOLT, FLANGE (6X14)
7	91201ZL8003	1	OIL SEAL (25.4X62X6)
8	9807956846	1	SPARK PLUG (BPR6ES) (NGK)

Not For
Reproduction

Fan Cover

Note: Unless noted otherwise, use the standard torque specifications

Mfg. No: 1434-2



Fan Cover

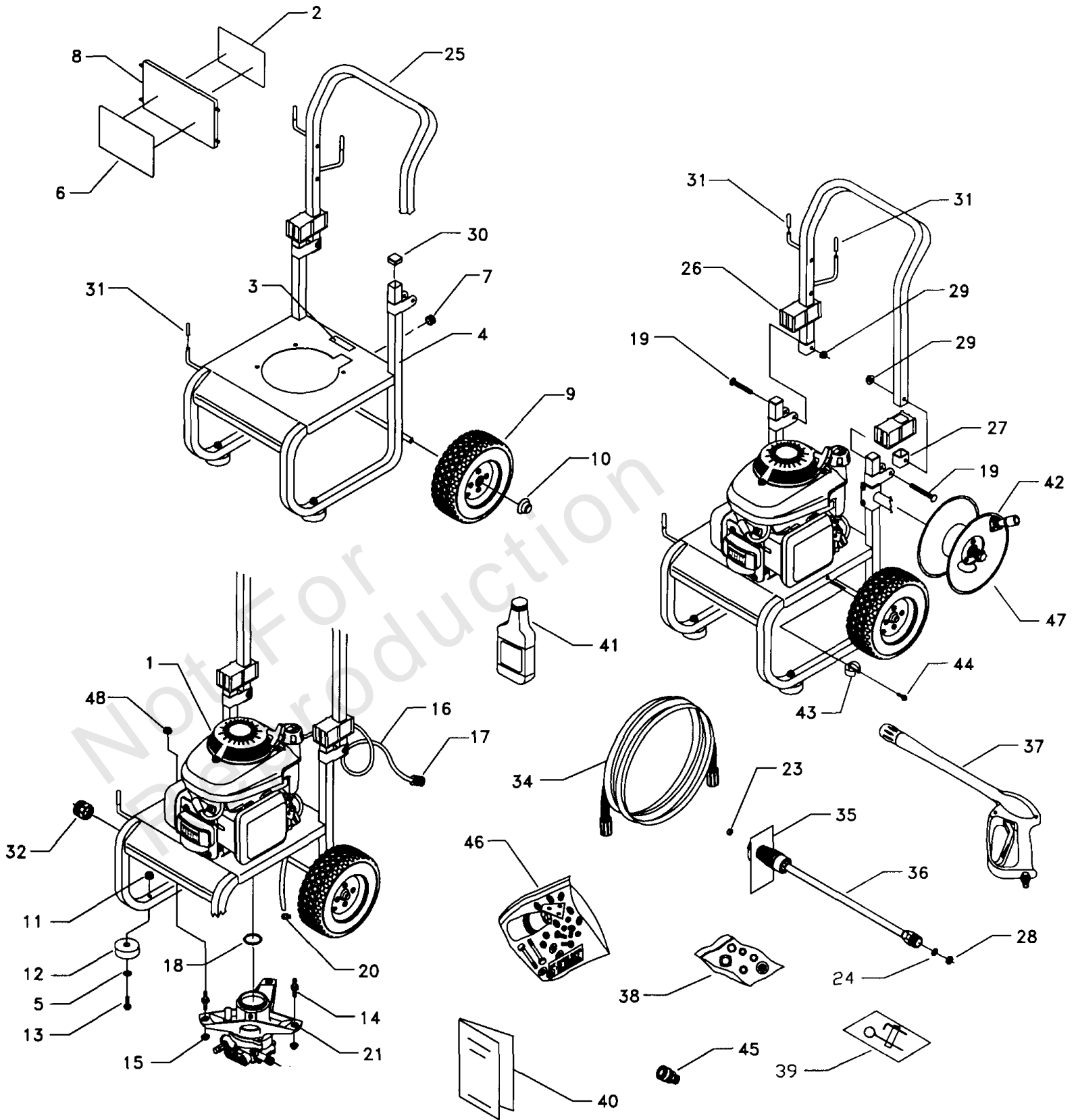
REF NO	PART NO	QTY	DESCRIPTION
1	16854ZH8000	1	RUBBER, SUPPORTER (107MM)
2	16950ZG9M02	1	PETCOCK ASSY. (MAN)
3	16956ZM0000	1	BRACKET, PETCOCK
4	17620ZL8003	1	CAP ASSY., FUEL TANK
5	17702ZM0000	1	TUBE, FUEL
6	19610ZM0010ZA	1	COVER COMP., FAN "NH1"
8	33609GK4620	1	COLLAR, FR. TURN SIGNAL
9	90043ZL8000	3	BOLT, STUD
10	938910501008	1	SCREW-WASHER (5X10)
11	950015500840M	1	BULK HOSE, FUEL (5.5X8000) (5.5X150) B
12	9500202080	1	CLIP, TUBE (138)
13	9500202100	2	CLIP, TUBE (1310)
14	9500250000	1	CLIP, TUBE (C9)

Not For
Reproduction

Main Unit

Note: Unless noted otherwise, use the standard torque specifications

Mfg. No: 1434-2



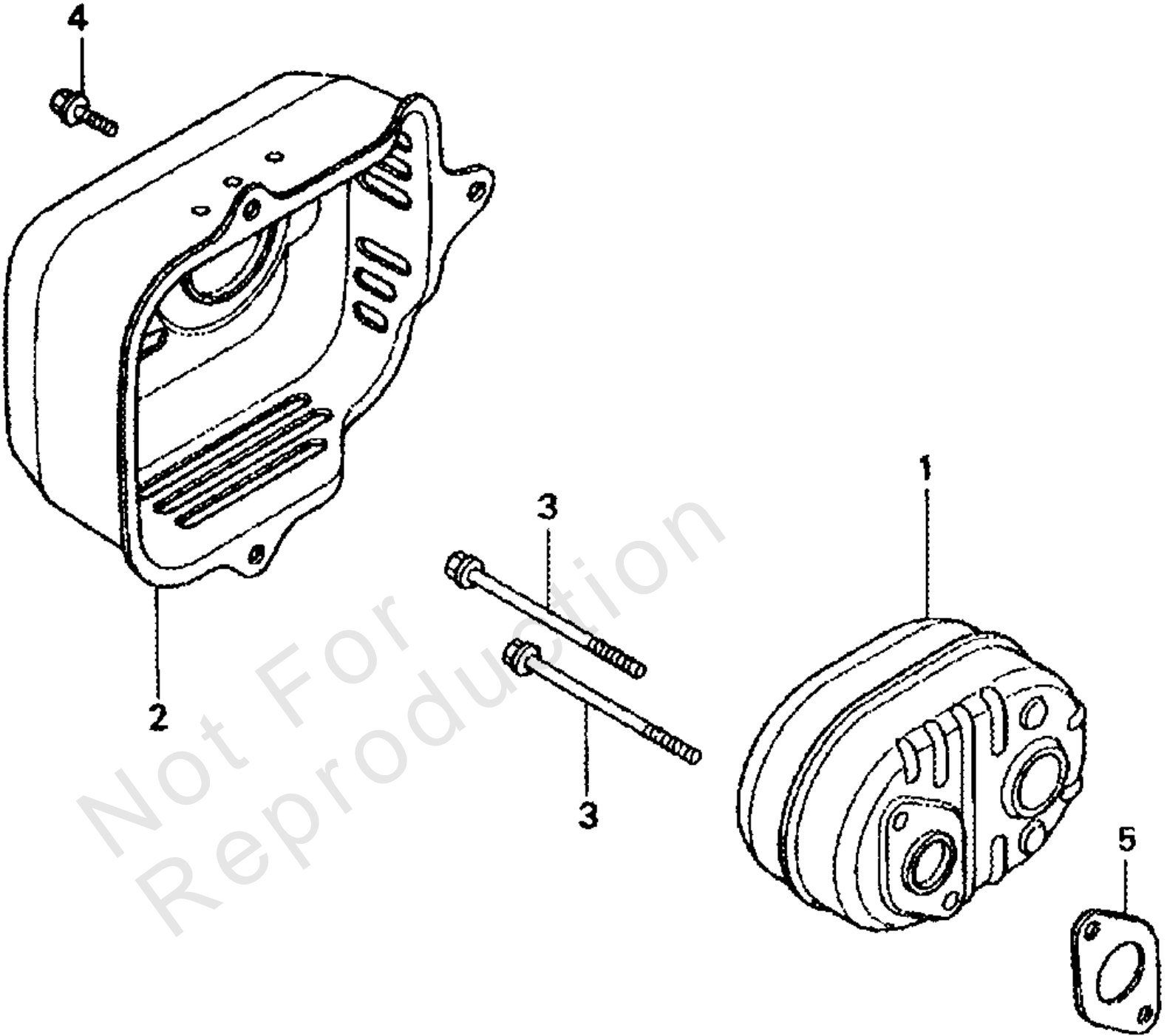
Main Unit

REF NO	PART NO	QTY	DESCRIPTION
1			UNKNOWN
2	B1932	1	DECAL, Instructions
3	96307	1	DECAL, 1-800 Number
4	EB5654	1	BASE, Polo Grn Powder Coated
5	50190	2	WASHER, .34 X 1
6	B5671	1	DECAL, 2400 PSI
7	30809	1	GROMMET, Rubber
8	B1631B	1	BILLBOARD
9	B4966	2	TIRE, 10"
10	75402C	2	PUSHNUT, 5/8"
11	52858	2	NUT, M8 Locking Flange
12	27007	2	MOUNT, Vibration
13	39288	2	HHCS, M8 - 1.25 x 55
14	187198	3	STUD, Double Ended
15	B1880	3	NUT, with Washer
16	A1040B	1	HOSE, Chemical
17	A1041	1	FILTER, Chemical Hose
18	B2218	1	SEAL, Engine Donut
19	31669	2	CARRIAGE BOLT, 1/4" - 20 x 1-3/4"
20	48031G	1	CLAMP, Hose 3/8"
21		1	ASSY., Pump -(For replacement, order 209940GS)
21	209940GS	1	REPLACEMENT PUMP ASSEMBLY
23	21761	1	NOZZLE, Replacement
24	B4224	1	SCREEN, Gun Inlet
25	EB5653	1	HANDLE, Polo Gm Powder Coated
26	B1779	2	COVER, Hinge
27	B2347	2	CAP, End
28	97837	1	O-RING, Hi Pressure Trns
29	B2071	2	NUT, 1/4-20 Locking Flange
30	46476	2	CAP, Plug
31	B2516	3	CAP, Vinyl
32	21424	1	CONNECTOR, Garden Hose
34	B5642	1	HOSE, 1/4" x 25'
35	97566	1	TAG, Nozzle Instructions
36	B3335	1	WAND, Adjustable Nozzle
37	B3263A	1	GUN, High Pressure
38	B5830	1	KIT, Maintenance
39	B3708	1	KIT, Nozzle, Cleaning
40	B5659	1	MANUAL
41	AB3061B	1	OIL, Engine
42	B4992	1	REEL, Hose
43	B2427B	1	CLIP, Holder
44	B2153	1	SELF DRILL, 12 - 14 x 7/8"
45	95518	1	QUICK DISCONNECT
46	186317	1	KIT, Hardware Hose Reel
47	186318	1	REEL, Hose without Hardware
48	67989	3	NUT, M8 Serrated Flange
900	~NSP	1	ENGINE, Honda 5.5 H.P.

Muffler

Note: Unless noted otherwise, use the standard torque specifications

Mfg. No: 1434-2



Muffler

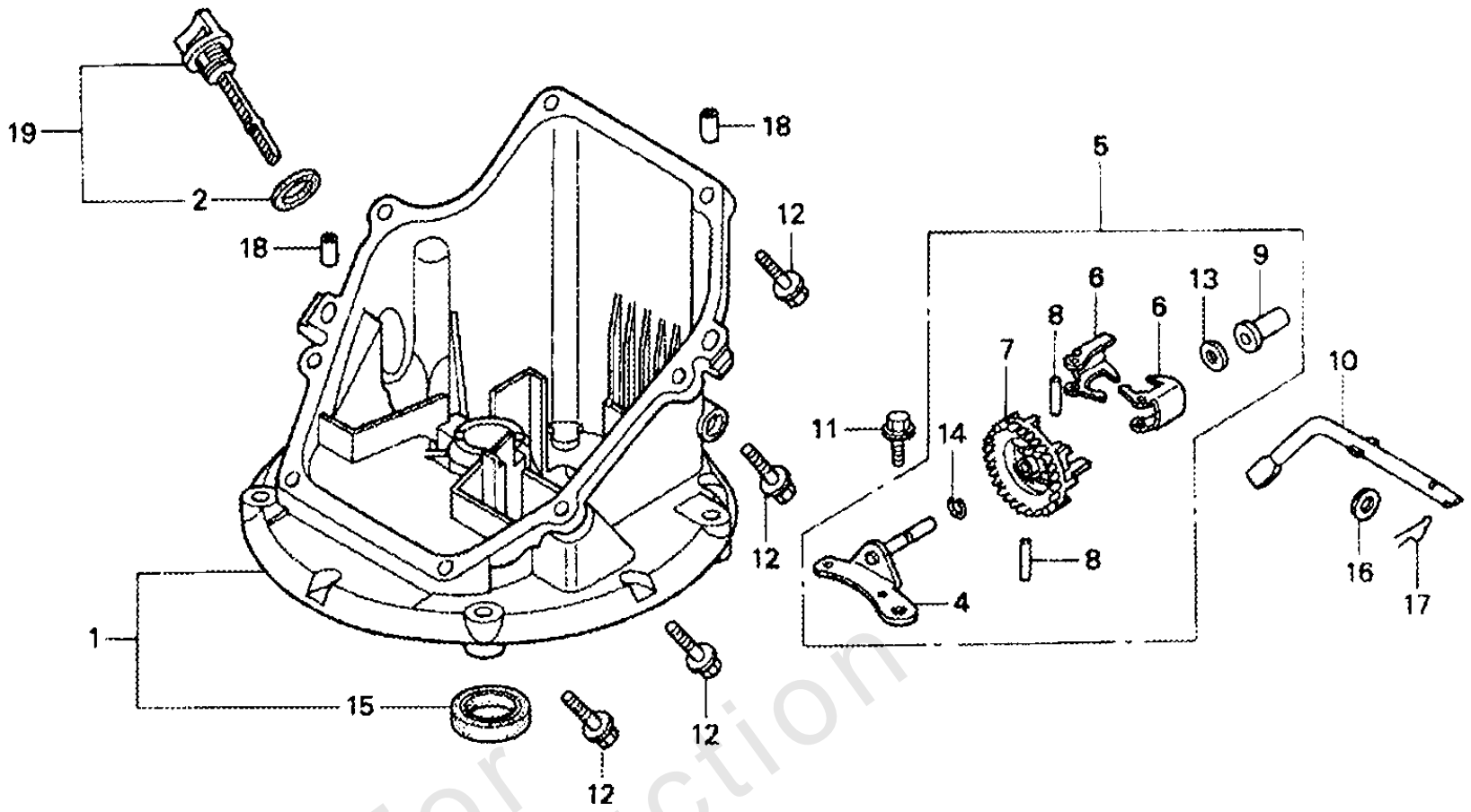
REF NO	PART NO	QTY	DESCRIPTION
1	18310ZM0000	1	MUFFLER COMP.
2	18321ZL8000	1	PROTECTOR, MUFFLER
3	90004ZL8000	2	BOLT, FLANGE (6X79) (CT200)
4	90013883000	3	BOLT, FLANGE (6X12) (CT200)
5	18381ZL8305	1	GASKET, MUFFLER

Not For
Reproduction

Oil Pan

Note: Unless noted otherwise, use the standard torque specifications

Mfg. No: 1434-2



Oil Pan

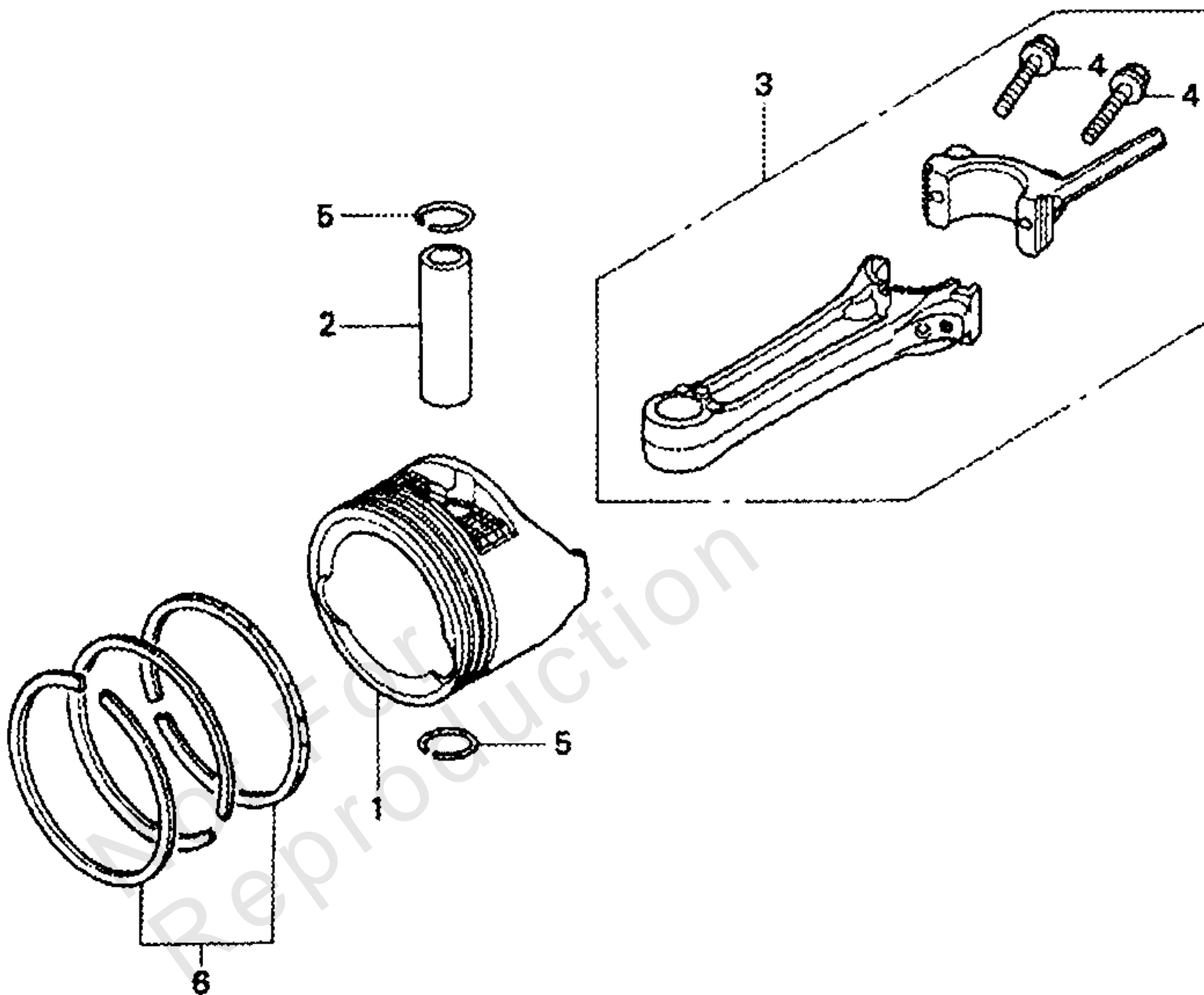
REF NO	PART NO	QTY	DESCRIPTION
1	11300ZM0810	1	PAN ASSY., OIL
2	15625ZE1003	1	GASKET, OIL FILLER CAP
4	16508ZM0000	1	SHAFT COMP., GOVERNOR HOLDER
5	16510ZM0000	1	GOVERNOR ASSY.
6	16511ZL8000	2	WEIGHT, GOVERNOR
7	16512ZM0000	1	HOLDER, GOV. WEIGHT
8	16513ZE1000	2	PIN, GOVERNOR WEIGHT
9	16531ZE1000	1	SLIDER, GOVERNOR
10	16541ZM0000	1	SHAFT, GOVERNOR ARM
11	90014952000	1	BOLT, FLANGE (6X14)
12	90121952000	8	BOLT, FLANGE (6X25)
13	90451ZE1000	1	WASHER, THRUST (6MM)
14	90602ZE1000	1	CLIP, GOV. HOLDER
15	91202ZL8003	1	OIL SEAL (28X41.25X6)
16	9410106800	1	WASHER, PLAIN (6MM)
17	9425108000	1	PIN, LOCK (8MM)
18	9430108200	2	PIN, DOWEL (8X20)
19	15650ZM0003	1	GAUGE ASSY., OIL LEVEL

Not For
Reproduction

Piston-Connecting Rod

Note: Unless noted otherwise, use the standard torque specifications

Mfg. No: 1434-2



Piston-Connecting Rod

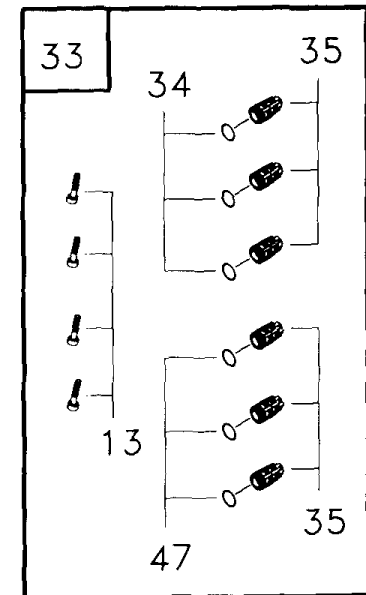
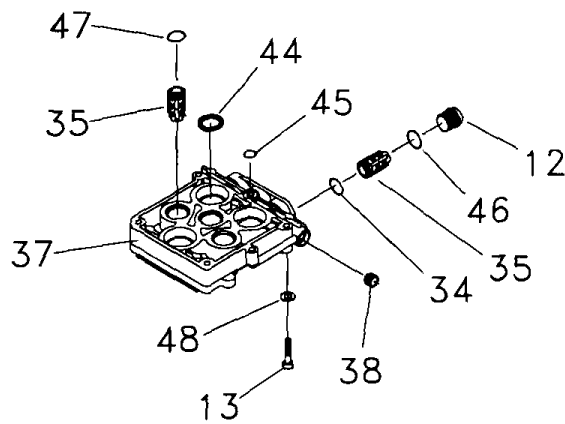
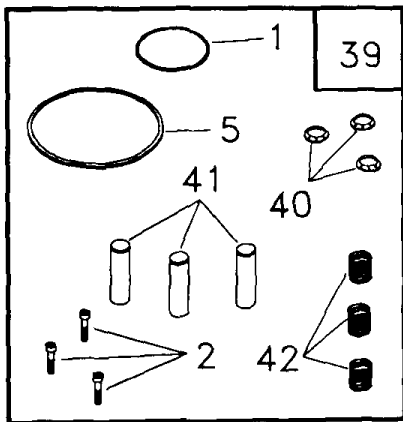
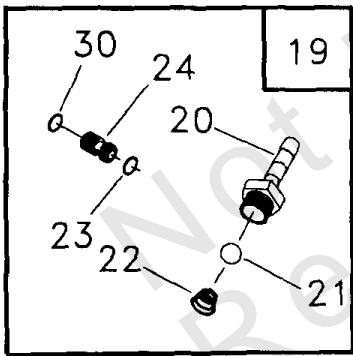
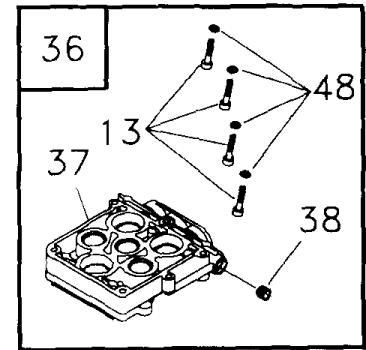
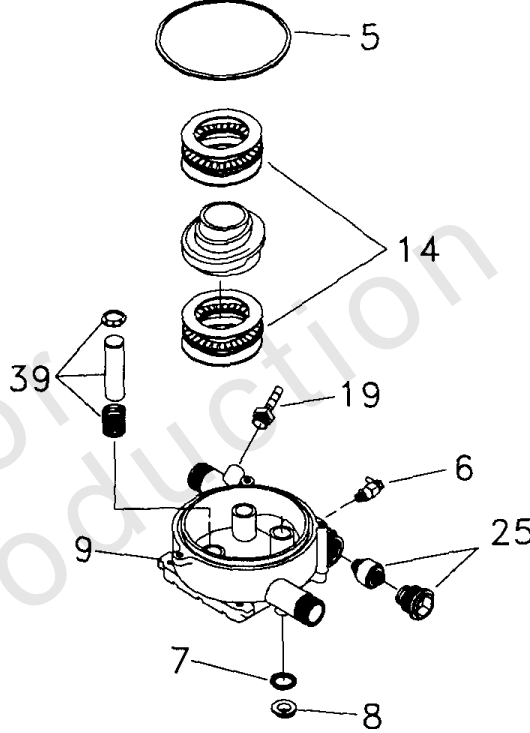
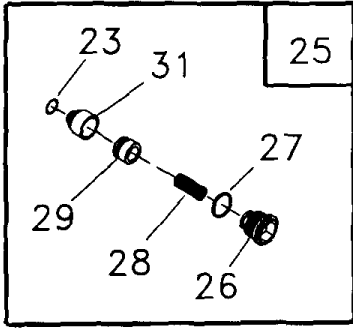
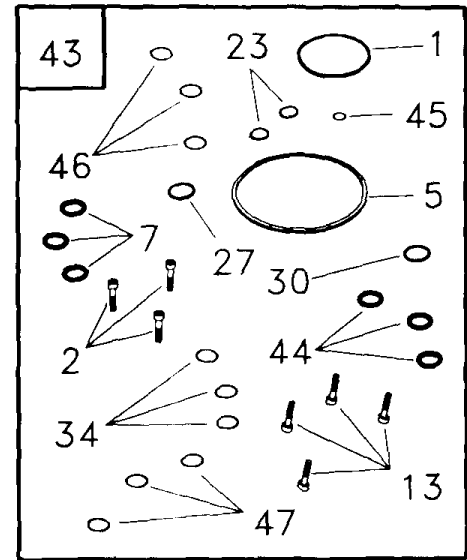
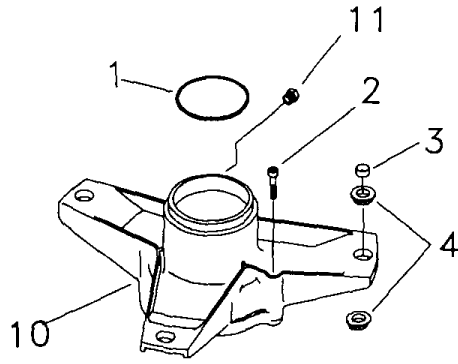
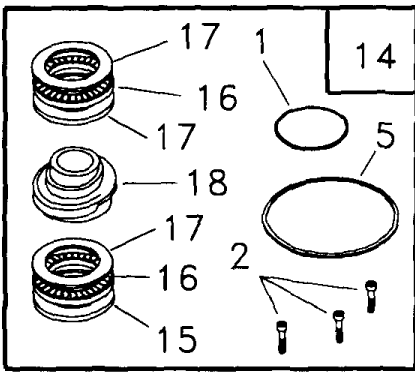
REF NO	PART NO	QTY	DESCRIPTION
1	13101ZL8000	1	PISTON
2	13111ZE0000	1	PIN, PISTON
3	13200ZL8000	1	ROD ASSY., CONNECTING
4	90001ZE1000	2	BOLT, CONNECTING ROD
5	90551ZE0000	2	CLIP, PISTON PIN (13MM)
6	13010ZL8003	1	RING SET, PISTON (RIKEN)

Not For
Reproduction

Pump

Note: Unless noted otherwise, use the standard torque specifications

Mfg. No: 1434-2



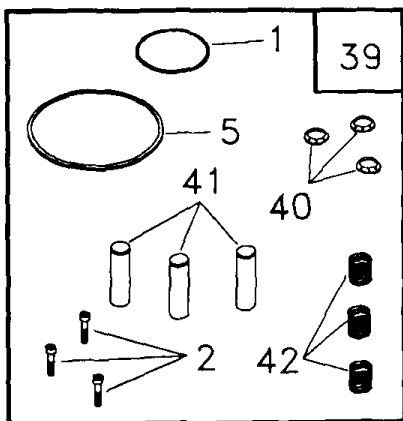
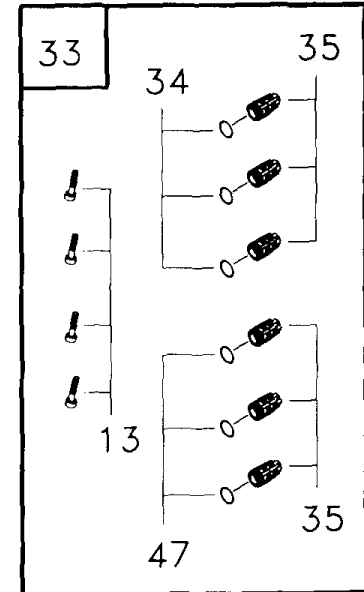
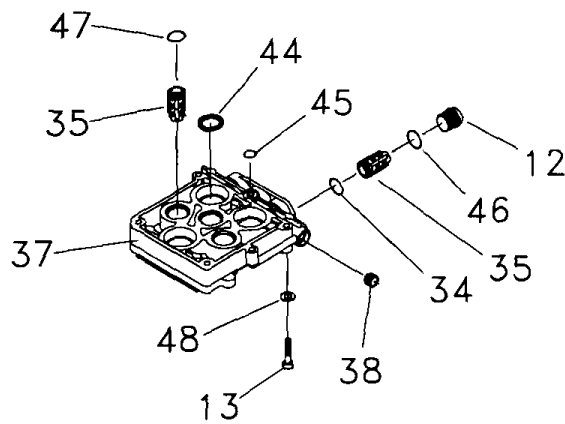
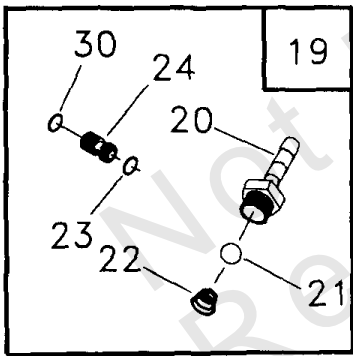
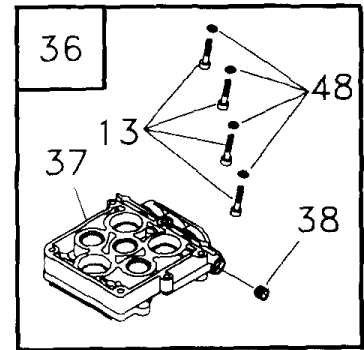
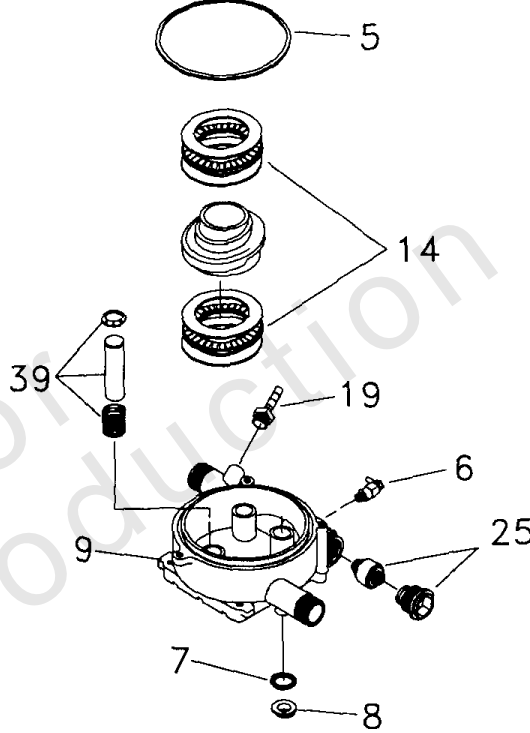
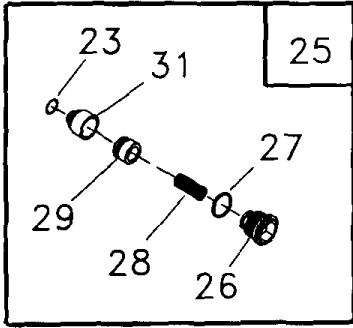
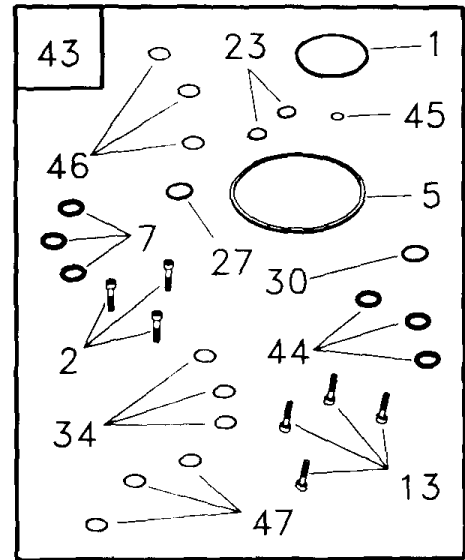
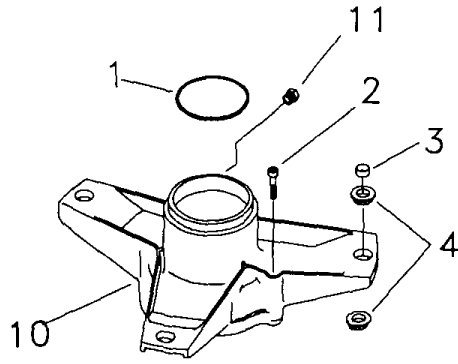
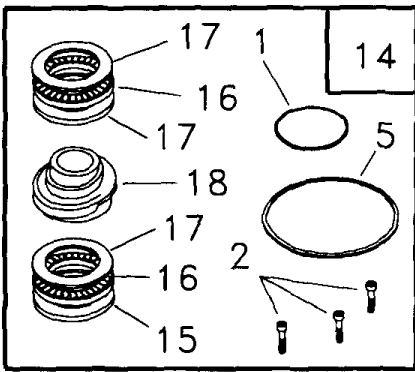
Pump

REF NO	PART NO	QTY	DESCRIPTION
1	B2218	1	O-RING, Engine Seal
2	97962	3	SHCS, M6 - 1 x 25
3	96795	3	SLEEVE, Grommet Spacer
4	21429	6	BUSHING, Rubber Mount
5	97835	1	O-RING, Housing Seal
6	21783	1	THERMAL RELIEF, GPW-EG
7	93680	3	SEAL, Oil Piston
8	97831	3	SPACER, Pilot
9	B2702	1	HOUSING, Piston
10	B5003	1	ADAPTER, Engine
11	B5710	1	VALVE, 1/8 npt 1/5 PSI
12	97841	3	CAP, Outlet Check Valve
13	40946	4	SHCS, M6-1.0 x 35
14	185710	0	KIT, AXIAL CAM -Service kits include all parts shown within the box. Certain parts may only be available as components of a kit.
1		1	O-RING, Engine Seal
2		3	SHCS, M6 - 1 x 25
5		1	O-RING, Housing Seal
15		1	WASHER, Brg. 36 x 65 x 6Thk
16		2	ASSY., Brg. Cage 45 x 65
17		3	WASHER, Brg. 45 x 65 x 1
18		1	CAM, Axial 5.6 7/8"SAE
19	185287	0	KIT, CHEM INJECT -Service kits include all parts shown within the box. Certain parts may only be available as components of a kit.
20		1	FITTING, Chem Inject
21		1	BALL, Chem Inject
22		1	SPRING, Chem Inject
23		1	O-RING, Venturi & Seat, Black
24		1	VENTURI, Chem Inject
30		1	O-RING, Venturi, Yellow
25	185711	0	KIT, UNLOADER 2300 -Service kits include all parts shown within the box. Certain parts may only be available as components of a kit.
23		1	O-RING, Venturi & Seat, Black
26		1	CAP, Unloader
27		1	O-RING, Unloader Cap
28		1	SPRING, Unloader
29		1	PISTON, Unloader
31		1	SEAT, Unloader
33	185712	0	KIT, CHECK VALVES -Service kits include all parts shown within the box. Certain parts may only be available as components of a kit.
13		4	SHCS, M6-1.0 x 35
34		3	O-RING, Check Valve
35		6	ASSY., Check Valve
47		3	O-RING, Check Valve, White
36	185531	0	KIT, HEAD BRASS EG -Service kits include all parts shown within the box. Certain parts may only be available as components of a kit.
13		4	SHCS, M6-1.0 x 35
37		1	HEAD, Pump
38		1	PLUG, 1/8-28

Pump

Note: Unless noted otherwise, use the standard torque specifications

Mfg. No: 1434-2



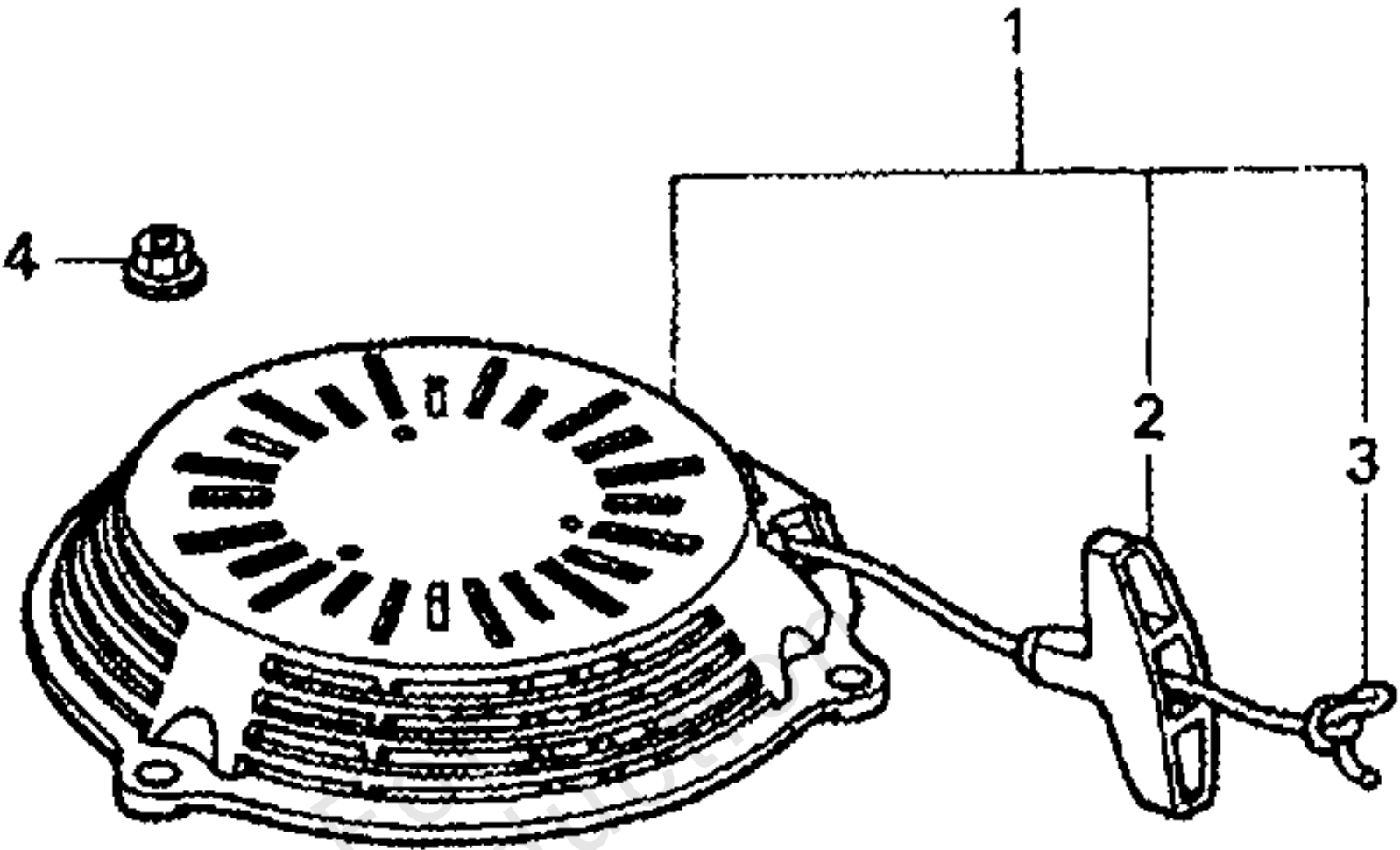
Pump

REF NO	PART NO	QTY	DESCRIPTION
48		4	WASHER, M6 Flat
39	185713	0	KIT, PISTON & SPRING -Service kits include all parts shown within the box. Certain parts may only be available as components of a kit.
1		1	O-RING, Engine Seal
2		3	SHCS, M6 - 1 x 25
5		1	O-RING, Housing Seal
40		3	RETAINER, Piston Spring
41		3	PISTON, Dia. 15 x 65
42		3	SPRING, Piston Return
43	185714	0	KIT, O-RING/SEAL 2300 -Service kits include all parts shown within the box. Certain parts may only be available as components of a kit.
1		1	O-RING, Engine Seal
2		3	SHCS, M6 - 1 x 25
5		1	O-RING, Housing Seal
7		3	SEAL, Oil Piston
13		4	SHCS, M6-1.0 x 35
23		2	O-RING, Venturi & Seat, Black
27		1	O-RING, Unloader Cap
30		1	O-RING, Venturi, Yellow
34		3	O-RING, Check Valve
44		3	SEAL, Double-Lip
45		1	O-RING, High Pressure Transfer
46		3	O-RING, Outlet CV Cap
47		3	O-RING, Check Valve, White

Recoil

Note: Unless noted otherwise, use the standard torque specifications

Mfg. No: 1434-2



Not
Reproduced

Recoil

REF NO	PART NO	QTY	DESCRIPTION
1	28400ZM0632ZA	1	STARTER ASSY., RECOIL "NH1"
2	28461ZL8003	1	KNOB, RECOIL STARTER
3	28462ZL8631	1	ROPE, RECOIL STARTER
4	90303MR1000	3	NUT, FLANGE (6MM)

Not For
Reproduction

Hardware Identification & Torque Specifications

Torque Specification Chart								
FOR STANDARD METRIC MACHINE HARDWARE (Tolerance ± 20%)								
Property Class	5.6		8.8		10.9		12.9	
	Class 5.6		Class 8.8		Class 10.9		Class 12.9	
Size Of Hardware	in/lbs	Nm.	in/lbs	Nm.	in/lbs	Nm.	in/lbs	Nm.
	ft/lbs		ft/lbs		ft/lbs		ft/lbs	
M3	5.88	.56	13.44	1.28	19.2	1.80	22.92	2.15
M4	13.44	1.28	30.72	2.90	43.44	4.10	52.56	4.95
M5	26.4	2.50	60.96	5.75	5.97	8.10	7.15	9.7
M6	44.64	4.3	7.3	9.9	10.3	14	12.1	16.5
M7	5.2	7.1	12.1	16.5	16.9	23	19.9	27
M8	7.7	10.5	17.7	24	25	34	29	40
M10	15	21	35	48	50	67	59	81
M12	26	36	61	83	86.2	117	103	140
M14	42	58	101	132	136	185	162	220
M16	64	88	147	200	210	285	250	340
M18	89	121	202	275	287	390	346	470
M20	126	171	290	390	405	550	486	660
M22	169	230	390	530	559	745	656	890
M24	217	295	497	375	708	960	840	1140
M27	320	435	733	995	1032	1400	1239	1680
M30	435	590	995	1350	1401	1900	1681	2280
M33	590	800	1349	1830	1902	2580	2278	3090
M36	759	1030	1740	2360	2441	3310	2935	3980
M39	988	1340	2249	3050	3163	4290	3798	5150

Torque Specification Chart						
FOR STANDARD MACHINE HARDWARE (Tolerance ± 20%)						
Hardware Grade	No Marks		SAE Grade 5		SAE Grade 8	
	SAE Grade 2		SAE Grade 5		SAE Grade 8	
Size Of Hardware	in/lbs	Nm.	in/lbs	Nm.	in/lbs	Nm.
	ft/lbs		ft/lbs		ft/lbs	
8-32	19	2.1	30	3.4	41	4.6
8-36	20	2.3	31	3.5	43	4.9
10-24	27	3.1	43	4.9	60	6.8
10-32	31	3.5	49	5.5	68	7.7
1/4-20	66	7.6	8	10.9	12	16.3
1/4-28	76	8.6	10	13.6	14	19.0
5/16-18	11	15.0	17	23.1	25	34.0
5/16-24	12	16.3	19	25.8	29	34.0
3/8-16	20	27.2	30	40.8	45	61.2
3/8-24	23	31.3	35	47.6	50	68.0
7/16-14	30	40.8	50	68.0	70	95.2
7/16-20	35	47.6	55	74.8	80	108.8
1/2-13	50	68.0	75	102.0	110	149.6
1/2-20	55	74.8	90	122.4	120	163.2
9/16-12	65	88.4	110	149.6	150	204.0
9/16-18	75	102.0	120	163.2	170	231.2
5/8-11	90	122.4	150	204.0	220	299.2
5/8-18	100	136	180	244.8	240	326.4
3/4-10	160	217.6	260	353.6	386	525.0
3/4-16	180	244.8	300	408.0	420	571.2
7/8-9	140	190.4	400	544.0	600	816.0
7/8-14	155	210.8	440	598.4	660	897.6
1-8	220	299.2	580	788.8	900	1,244.0
1-12	240	326.4	640	870.4	1,000	1,360.0

The guides and ruler furnished below are designed to help you select the appropriate hardware.



Nut, M8

Thread Diameter (mm)

Inside Diameter (in) Threads per inch

Nut, 1/2-16



Screw, M8- 1.25 x 25

Thread Diameter (mm) Distance between threads (mm) Body Length (mm)

Body Diameter Threads per inch Body Length (in)

Screw, 1/2- 16 x 2



Standard Hardware Sizing

When a washer or nut is identified as 1/2" (M8), this is the *Nominal size*, meaning the *inside diameter* is 1/2 inch (8mm metric thread diameter); if a second number is present it represents the *threads per inch* (distance between threads).

When bolt or capscrew is identified as 1/2 - 16 x 2" (M8 - 1.25 x 50), this means the *Nominal size*, or body diameter is 1/2 inch (8mm metric thread diameter), the second number, 16, represents the *threads per inch*, (*distance between threads*). The final number is the body length of the bolt or screw, 2 inches (50mm).

NOTES

- These torque values are to be used for all hardware excluding: locknuts, self-tapping screws, thread forming screws, sheet metal screws and socket head setscrews.
- Recommended seating torque values for locknuts:
 - for prevailing torque locknuts - use 65% of grade 5 torques.
 - for flange whizlock nuts and screws - use 135% of grade 5 torques.
- Unless otherwise noted on assembly drawings, all torque values must meet this specification.

Common Hardware Types

Hex Head Capscrew



Washer



Carriage Bolt



Hex Nut

Wrench & Fastener Size Guide

1/4" Bolt or Nut Wrench—7/16"	5/16" Bolt or Nut Wrench—1/2"	3/8" Bolt or Nut Wrench—9/16"	7/16" Bolt or Nut Wrench (Bolt)—5/8" Wrench (Nut)—11/16"	1/2" Bolt or Nut Wrench—3/4"
M6 Bolt or Nut Wrench—10mm	M8 Bolt or Nut Wrench—13mm	M10 Bolt or Nut Wrench—17mm	M12 Bolt or Nut Wrench—19mm	M14 Bolt or Nut Wrench—22mm

